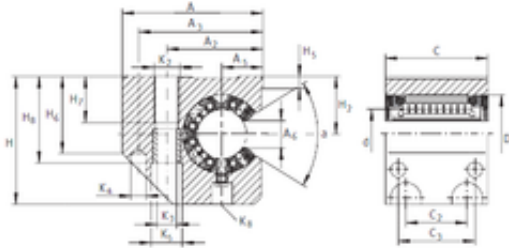
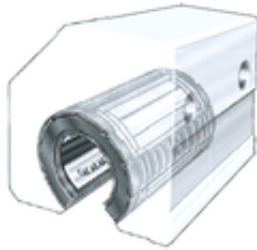




TRANSMISSIONS?BEARINGS EUROPE



KGSC40-PP-AS Bearing 2D drawings and 3D CAD models

INA KGSC40-PP-AS linear bearings

Bearing No. KGSC40-PP-AS

Bore Diameter	40 mm
d	40 mm
A6	18,8 mm
H5	9,5 mm
H6	60 mm
H7	36 mm
H8	67,6 mm
K3	15,5 mm
K4	12 mm
K5	24 mm
Thread (K2)	M20
Thread (K8)	NIP 5 MZ
A5	32 mm
C3	60 mm
Angle (?)	56 °
A	110 mm
C	80 mm
D	62 mm
H	100 mm
H2	45 mm
A2	75 mm
A3	97 mm
C2	48 mm
Weight	1,8 Kg
Basic dynamic load rating (C)	10,2 kN